

AQUAoil

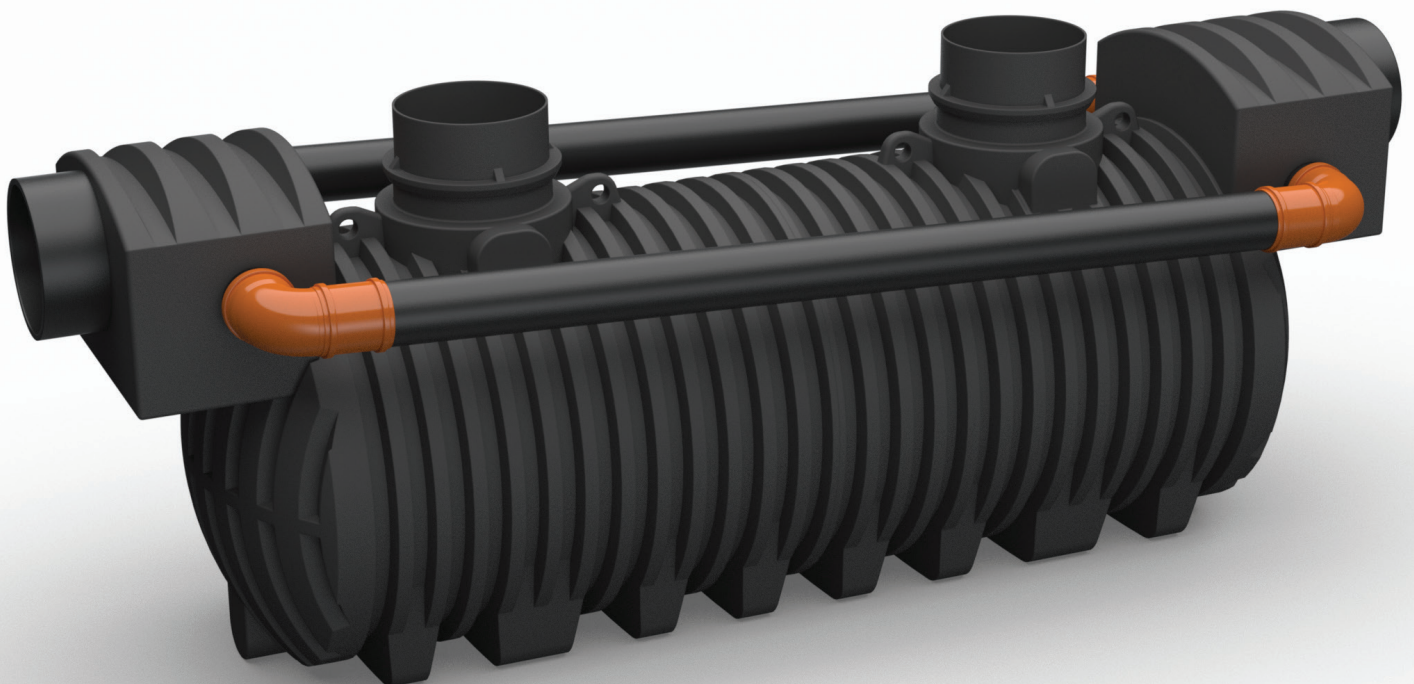
OIL AND GREASE SEPARATORS



Table of Contents

AQUAoil OIL SEPARATORS

What are oil separators?	3
Why do we use oil separators?	4
How do oil separators work?	4
Advantages of oil separators	4
Categories of oil separators	5
1.1. AQUAoil OIL SEPARATORS WITHOUT COALESCENCE FILTER	6
1.2. AQUAoil OIL SEPARATORS WITH COALESCENCE FILTER	8
1.2.1 AQUAoil OIL SEPARATORS WITH COALESCENCE FILTER WITHOUT BY-PASS	8
1.2.2 AQUAoil OIL SEPARATORS WITH COALESCENCE FILTER WITH BY-PASS	10
1.2.2.1 AQUAoil OIL SEPARATORS WITH COALESCENCE FILTER WITH BY-PASS – 10% TREATMENT	10
1.2.2.2 AQUAoil OIL SEPARATORS WITH COALESCENCE FILTER WITH BY-PASS – 20% TREATMENT	13
3. AQUAoil GREASE SEPARATORS	16
4. ADDITIONAL EQUIPMENT	18
5. INSTALLATION METHOD IN CASES WITH AUTOMATIC CLOSING DEVICE	19



AQUAoil Oil Separators

They remove oil – protect groundwater – comply with regulations

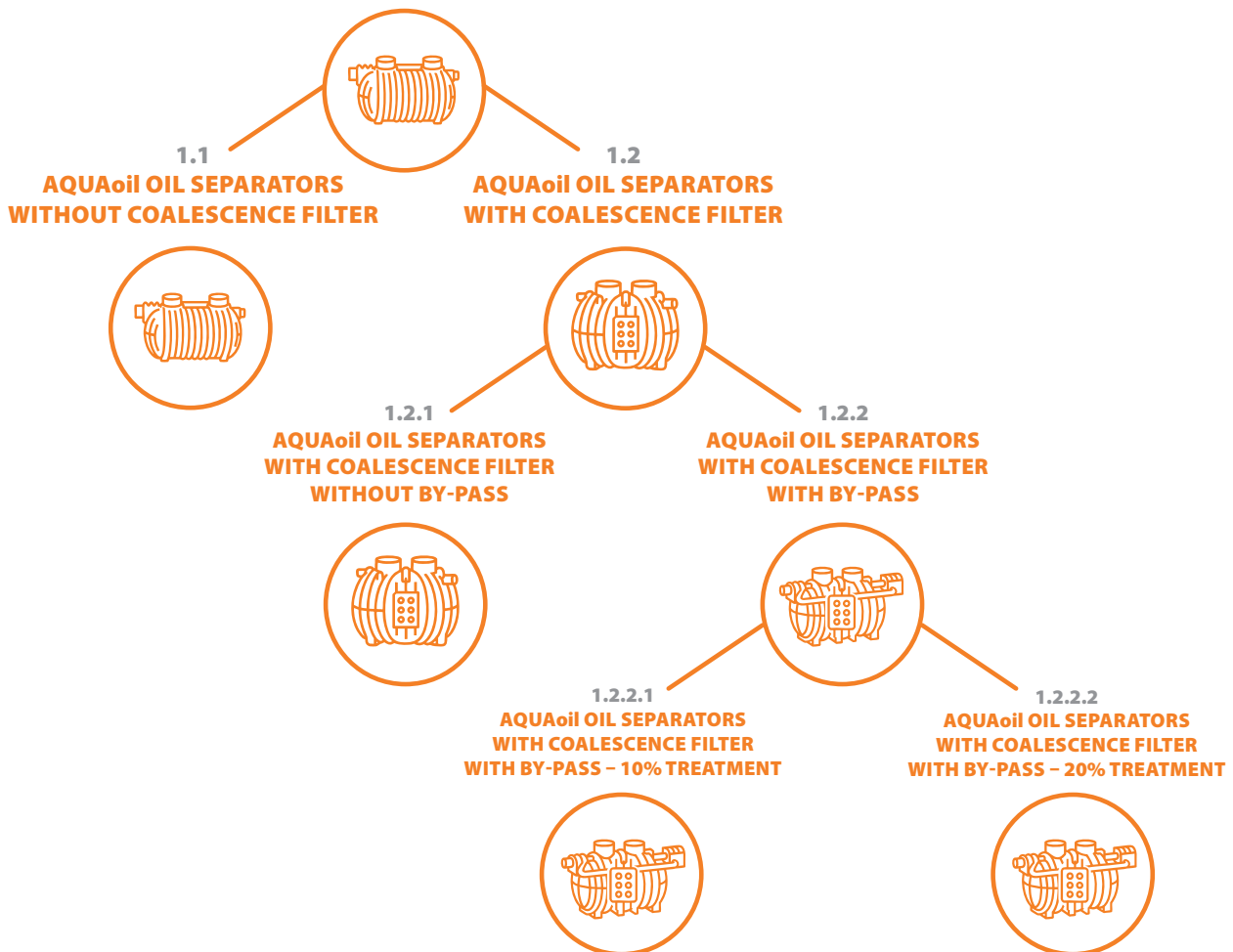
Oil separators represent a key solution for the efficient removal of oil from wastewater and for protecting the environment from pollution. Even a single drop of oil can contaminate a large quantity of water and cause serious environmental damage, while environmental legislation also obliges us to prevent such pollution. Our oil separators provide the perfect combination of reliability, high efficiency, and compliance with regulatory requirements.

What are oil separators?

Oil separators separate oil and other light liquids from wastewater using gravity and multi-stage filtration. Their robust design, long service life, and easy maintenance ensure reliable operation and represent a sustainable and cost-effective environmental protection solution.

On the following pages of the catalogue, a selection of standard oil separator models is presented. For assistance in selecting and ordering separators tailored to the specific requirements of your construction site, please contact our experts.

1. AQUAoil OIL SEPARATORS



Why do we use oil separators?

AQUAoil oil separators are used to separate stormwater from light liquids in the form of fuels and oils (< 0.95 kg/l), which pose a risk of groundwater contamination, especially near:

- petrol stations,
- large parking garages,
- all traffic surfaces (various types of parking areas and road surfaces),
- mechanical workshops and car washes, and
- various technological processes.

Before discharging stormwater into the sewage system, it is necessary to ensure its pre-treatment so that the hydrocarbon content does not exceed the legally prescribed limit values. These requirements are defined by applicable legislation and the SIST EN 858-1 and 858-2 standards, which prescribe:

- up to 5 mg/l for coalescence oil separators (S1P),
- up to 100 mg/l for gravity oil separators (S2P)

How do oil separators work?

Separators operate on the principle of gravity. Oil, petrol, diesel fuel, lubricants, heating oil, and other light liquids have a lower specific density than water, which oil and grease separators utilize in their operation by reducing the flow of stormwater. Particles of light liquids separate and rise to the surface. The treated water then safely flows through the outlet into the drainage sewer system.



Designed and dimensioned in accordance with the SIST EN 858 standard



Tested using the most advanced testing methods



Low weight – easy transport and installation



Long material service life



Polyethylene products, particularly suitable for recycling – environmentally friendly



Easy maintenance and servicing



Product of a Slovenian manufacturer

Categories of Oil Separators

The selection of an oil separator must be based on a detailed analysis of the installation site, as project conditions influence the sizing and configuration of the system to ensure optimal oil separation and regulatory compliance. An important component of oil separators is the sludge trap. The term sludge trap refers to the part of the separator where solid substances (sand, silt, larger particles) settle at the bottom before the oil-contaminated water passes into the next section of the unit. The table below shows the sludge trap volume according to the installation location (the table is based on the SIST EN 858 standard).

IMPORTANT: The appropriate category of oil separator must be determined by the designer. The volume is defined in accordance with the table below.

REQUIRED OIL SEPARATOR CATEGORY	Application of the oil separator	Minimum sludge trap volume	
Small	For water with a low amount of sediment – e.g. collection areas at petrol stations, low-traffic parking areas	$(100 \times NS) / f_d$	a
Medium	Petrol stations, manual car washes, garages, parking areas, industrial facilities, power plants	$(200 \times NS) / f_d$	b
High	Truck wash facilities, city buses, agricultural vehicles, automatic car washes	$(300 \times NS) / f_d$	b
		$(300 \times NS) / f_d$	c

- a - the formula does not apply to separators smaller than NS 10, except for covered parking areas
- b - regardless of the formula, the minimum sludge trap volume may not be less than 600 l
- c - regardless of the formula, the minimum sludge trap volume may not be less than 5000 l



1.1 AQUAOIL OIL SEPARATORS WITHOUT COALESCENCE FILTER

Gravity oil separators provide a basic level of treatment and are oil separators with an integrated sludge trap. They are manufactured in accordance with the SIST EN 858 standard, Class II (< 100 mg/l), which means that the outlet water must contain less than 100 mg of light substances (oil and fuel) per liter. They operate on the principle of gravity (separation due to density differences).

AQUAOil_S2P

CAT.	NOMINAL FLOW RATE TYPE AQUAOil S2P Q (l/s)	SLUDGE TRAP VOLUME (l)	TOTAL VOLUME (l)	PIPE CONNECTION C (mm) / D1 INLET + OUTLET	LENGTH L / L1 (max) (mm)	INLET / OUTLET HEIGHT		SEPARATOR HEIGHT H3 (mm)	DIAMETER DN (mm)	NO. OF INSPECTION OPENINGS	MAX SURFACE AREA (m ²)	IDENT
						H1 (mm)	H2 (mm)					
Small	NS 1,5	* 150	300	110	890/1220	590	570	1250	800	1	70	214098020
Medium		* 300	700	110	1090/1420	840	820	1750	1000	1	70	214098010
High		* 450	800	110	1090/1420	1090	1070	2000	1000	1	70	214098000
Small	NS 3	* 300	800	110	1090/1420	1090	1070	2000	1000	1	200	214098120
Medium		* 600	1200	110	1090/1420	1590	1570	2550	1000	1	200	214098110
High		900	2000	110	1640/1810	1205	1180	1700	1400	1	200	214098100
Small	NS 6	600	2000	125	1640/1810	1205	1180	1700	1400	1	400	214098220
Medium		1200	3000	125	2530/2700	1205	1180	1700	1400	2	400	214098210
High		1800	3500	125	1870/2070	1530	1505	2000	1750	1	400	214098200
Small	NS 10	1000	3500	160	1870/2070	1530	1505	2000	1750	1	670	214098320
Medium		2000	5000	160	2470/2680	1530	1505	2060	1750	1	670	214098310
High		3000	6000	160	2950/3150	1530	1505	2060	1750	1	670	214098300
Small	NS 15	1500	5000	200	2470/2680	1500	1475	2060	1750	1	1000	214098420
Medium		3000	6000	200	2950/3150	1500	1475	2060	1750	1	1000	214098410
High		4500	7000	200	3044/3600	1500	1475	2060	1750	1	1000	214098400
Small	NS 20	2000	6000	200	2933/3144	1500	1475	2060	1750	1	1400	214098520
Medium		4000	7000	200	3400/3610	1500	1475	2060	1750	1	1400	214098510
High		6000	10000	200	4945/5150	1500	1475	2060	1750	2	1400	214098500
Small	NS 30	3000	8000	250	4020/4400	1530	1505	2060	1750	2	2000	214098620
Medium		6000	10000	250	4950/5300	1530	1505	2060	1750	2	2000	214098610
High		9000	12000	250	5870/6460	1530	1505	2060	1750	2	2000	214098600
Small	NS 40	4000	10000	315	4950/5570	1530	1505	2060	1750	2	2700	214098720
Medium		8000	16000	315	4830/5500	1920	1870	2630	2300	2	2700	214098710
High		12000	18000	315	5350/6000	1920	1870	2630	2300	2	2700	214098700
Small	NS 50	5000	12000	315	5870/6500	1530	1505	2060	1750	2	3400	214098820
Medium		10000	18000	315	5350/6000	1920	1870	2650	2300	2	3400	214098810
High		15000	22000	315	6610/7330	1920	1870	2630	2300	2	3400	214098800
Small	NS 60	6000	16000	315	4830/5490	1920	1870	2630	2300	2	4000	214098920
Medium		12000	22000	315	6610/7330	1920	1870	2630	2300	2	4000	214098910
High		18000	28000	315	8040/8750	1920	1870	2630	2300	2	4000	214098900

* Vertical version

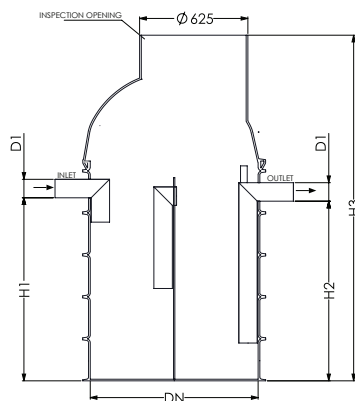
AQUAoil_S2P

CAT.	NOMINAL FLOW RATE TYPE AQUAoil S2P Q (l/s)	SEDIMENTATION CHAMBER VOLUME (l)	TOTAL VOLUME (l)	PIPE CONNECTION C (mm)/ D1 INLET + OUTLET	LENGTH L / L1 (max) (mm)	INLET / OUTLET HEIGHT H1 (mm) / H2 (mm)		SEPARATOR HEIGHT H3 (mm)	DIAMETER DN (mm)	NO. OF INSPECTION OPENINGS	MAX. AREA (m ²)	IDENT
Small	NS 80	8000	20000	315	5810/6535	1920	1870	2630	2300	2	5400	214099020
Medium		16000	28000	315	8040/8750	1920	1870	2630	2300	2	5400	214099010
High		24000	36000	315	10265/10990	1920	1870	2630	2300	2	5400	214099000
Small	NS 100	10000	24000	315	7080/7800	1920	1870	2630	2300	2	6700	214099120
Medium		20000	36000	315	10265/10990	1920	1870	2630	2300	2	6700	214099110
High		30000	46000	315	12980/13500	1920	1870	2630	2300	2	6700	214099100
Small	NS 150	15000	36000	400	10265/10990	1920	1870	2630	2300	2	10000	214099220
Medium		** 30000	30000+20000	400	14340/16000	1920	1850	2630	2300	4	10000	214099210
High		** 45000	46000+20000	400	18800/20000	1920	1850	2630	2300	4	10000	214099200
Small	NS 200	20000	46000	400	12980/13500	1920	1850	2630	2300	2	13400	214099320
Medium		** 40000	40000+30000	400	22400/22800	1920	1850	2630	2300	4	13400	214099310
High		** 60000	46000+40000	400	27000/27400	1920	1850	2630	2300	5	13400	214099300
Small	NS 250	** 25000	26000+30000	400	18500/18900	1920	1850	2630	2300	5	16700	214099420
Medium		** 50000	46000+30000	400	21520/22750	1920	1850	2630	2300	4	16700	214099410
High		** 75000	2x40000+40000	400	39000/39400	1970	1850	2630	2300	6	16700	214099400
Small	NS 300	** 30000	30000+30000	400	19800/20200	1970	1850	2630	2300	4	20100	214099520
Medium		** 60000	2x30000+40000	400	33400/33950	1970	1850	2630	2300	6	20100	214099510
High		** 90000	1x46000+1x40000+1x46000	400	37000/37400	1970	1850	2630	2300	6	20100	214099500

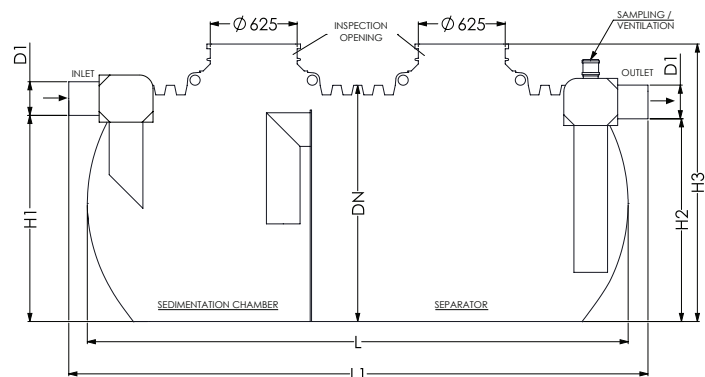
** Composite version

- Max. area calculated for a rainfall intensity of 150 l/s-ha with a maximum retention time T max. = 3 min
- Optional version with automatic shut-off device for all types (SIST 858-1)
- Optional version with oil level sensor (SIST 851-1)

AQUAoil S2P (upright version)



AQUAoil S2P (horizontal version)



* Images are symbolic and do not represent the actual shape of the oil separators.

1.2 AQUAoil OIL SEPARATORS WITH COALESCENT FILTER

1.2.1 AQUAoil OIL SEPARATORS WITH COALESCENT FILTER WITHOUT BY-PASS

Oil separators with a coalescent filter and integrated sedimentation chamber are manufactured in accordance with EN 858, Class I (<5 mg/l). They operate similarly to gravity oil separators. Compared to gravity oil separators, they provide additional treatment, as coalescent filters remove small droplets and emulsified oil residues from water. These cannot be effectively treated by the gravity process alone, because due to their small size, despite their density, they do not remain on the surface. In the coalescent unit, hydrocarbon molecules adhere to the coalescent material, combine on its surface into a thin layer and, once they reach a sufficient size, rise to the surface due to buoyancy force.

They ensure a high level of treatment efficiency and are suitable for most applications, especially where stricter discharge water quality requirements apply. They also remove small oil droplets.

AQUAoil_S1P

CAT.	NOMINAL FLOW RATE TYPE AQUAoil S1P Q (l/s)	SEDIMENTATION TANK VOLUME (l)	TOTAL VOLUME (l)	PIPE CONNECTION C (mm) / D1 INLET + OUTLET	LENGTH L / L1 (max) (mm)	INLET / OUTLET HEIGHT H1 (mm) / H2 (mm)		SEPARATOR HEIGHT H3 (mm)	DIAMETER DN (mm)	NUMBER OF INSPECTION OPENINGS	MAX. AREA (m ²)	IDENT
Small	NS 1,5	* 150	300	110	800/1220	590	570	1300	800	1	70	214100020
Medium		* 300	700	110	1000/1420	840	820	1800	1000	1	70	214100010
High		* 450	800	110	1000/1420	1090	1070	2060	1000	1	70	214100000
Small	NS 3	* 300	800	110	1000/1420	1090	1070	2060	1000	1	200	214100120
Medium		* 600	1200	110	1000/1420	1590	1570	2560	1000	1	200	214100110
High		900	2000	110	1640/1810	1205	1185	1700	1400	1	200	214100100
Small	NS 6	600	2000	125	1640/1810	1205	1185	1700	1400	1	400	214100220
Medium		1200	3000	125	2530/2700	1205	1185	1700	1400	2	400	214100210
High		1800	3500	125	1870/2070	1530	1505	2000	1750	1	400	214100200
Small	NS 10	1000	3500	160	1870/2070	1530	1505	2000	1750	1	670	214100320
Medium		2000	5000	160	2470/2680	1530	1505	2060	1750	1	670	214100310
High		3000	6000	160	2930/3150	1530	1505	2060	1750	1	670	214100300
Small	NS 15	1500	5000	200	2470/2680	1500	1475	2060	1750	1	1000	214100420
Medium		3000	6000	200	2930/3150	1500	1475	2060	1750	1	1000	214100410
High		4500	7000	200	3400/3600	1500	1475	2060	1750	1	1000	214100400
Small	NS 20	2000	6000	200	2900/3150	1500	1475	2060	1750	1	1400	214100520
Medium		4000	7000	200	3400/3600	1500	1475	2060	1750	1	1400	214100510
High		6000	10000	200	4945/5150	1500	1475	2060	1750	2	1400	214100500
Small	NS 30	3000	8000	250	4015/4300	1530	1505	2060	1750	2	2000	214100620
Medium		6000	10000	250	4950/5300	1530	1505	2060	1750	2	2000	214100610
High		9000	12000	250	5870/6460	1530	1505	2060	1750	2	2000	214100600
Small	NS 40	4000	10000	315	4950/5570	1530	1505	2060	1750	2	2700	214100720
Medium		8000	16000	315	4830/5500	1920	1870	2630	2300	2	2700	214100710
High		12000	18000	315	5350/6000	1920	1870	2630	2300	2	2700	214100700
Small	NS 50	5000	12000	315	5870/6500	1530	1505	2060	1750	2	3400	214100820
Medium		10000	18000	315	5350/6000	1920	1870	2630	2300	2	3400	214100810
High		15000	22000	315	6610/7330	1920	1870	2630	2300	2	3400	214100800
Small	NS 60	6000	16000	315	4830/5500	1920	1870	2630	2300	2	4000	214100920
Medium		12000	22000	315	6590/7285	1920	1870	2630	2300	3	4000	214100910
High		18000	28000	315	8040/8750	1920	1870	2630	2300	3	4000	214100900

* Vertical version

AQUAoil_S1P

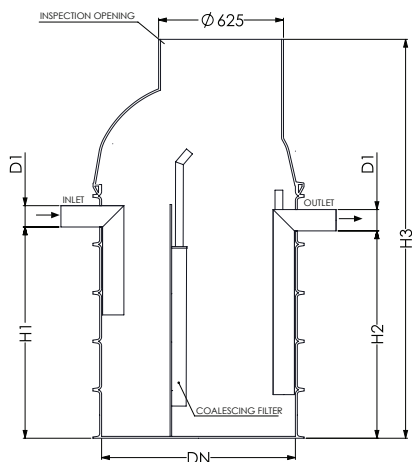
CAT.	NOMINAL FLOW RATE TYPE AQUAoil S1P Q (l/s)	SEDIMENTATION TANK VOLUME (l)	TOTAL VOLUME (l)	PIPE CONNECTION <D (mm) / D1	LENGTH L / L1 (max) (mm)	INLET / OUTLET HEIGHT H1 (mm) / H2 (mm)		SEPARATOR HEIGHT H3 (mm)	DIAMETER DN (mm)	NUMBER OF INSPECTION OPENINGS	MAX. AREA (m ²)	IDENT
Small	NS 80	8000	20000	315	5810/6535	1920	1870	2630	2300	2	5400	214101020
Medium		16000	28000	315	8040/8750	1920	1870	2630	2300	3	5400	214101010
High		24000	36000	315	10265/10990	1920	1870	2630	2300	3	5400	214101000
Small	NS 100	10000	24000	315	7060/7750	1920	1870	2630	2300	3	6700	214101120
Medium		20000	36000	315	10265/10990	1920	1870	2630	2300	3	6700	214101110
High		30000	46000	315	12980/13500	1920	1870	2630	2300	3	6700	214101100
Small	NS 150	15000	36000	400	10265/10990	1920	1870	2630	2300	3	10000	214101220
Medium		** 30000	30000+20000	400	14340/16000	1920	1850	2630	2300	4	10000	214101210
High		** 45000	46000+20000	400	18800/20000	1920	1850	2630	2300	5	10000	214101200
Small	NS 200	20000	46000	400	12980/13500	1920	1850	2630	2300	3	13400	214101320
Medium		** 40000	40000+30000	400	20700/21500	1920	1850	2630	2300	4	13400	214101310
High		** 60000	46000+40000	400	25250/25900	1920	1850	2630	2300	5	13400	214101300
Small	NS 250	** 25000	26000+30000	400	16080/17520	1920	1850	2630	2300	4	16700	214101420
Medium		** 50000	46000+30000	400	22500/23200	1920	1850	2630	2300	4	16700	214101410
High		** 75000	2x40000+40000	400	35600/36250	1970	1850	2630	2300	6	16700	214101400
Small	NS 300	** 30000	30000+30000	400	17060/18500	1970	1850	2630	2300	4	20100	214101520
Medium		** 60000	2x30000+40000	400	30200/30850	1970	1850	2630	2300	6	20100	214101510
High		** 90000	1x46000+1x40000+1x46000	400	39250/39900	1970	1850	2630	2300	6	20100	214101500

** Assembled version

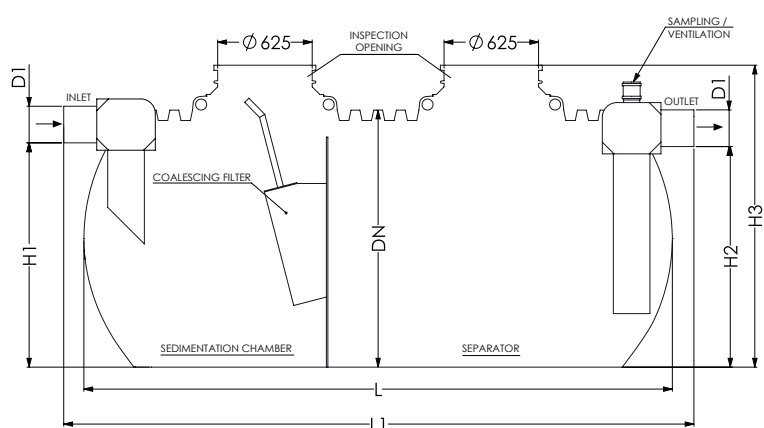
- Max. area calculated for rainfall intensity 150 l/s-ha with maximum retention time T max. = 3 min
- Optional version with automatic closure for all types (SIST 858-1)
- Optional version with oil level sensor (SIST 851-1)



AQUAoil S1P (vertical version)



AQUAoil S1P (horizontal version)



* Images are symbolic and do not represent the actual shape of the oil separators.

1.2.2 AQUAoil OIL SEPARATORS WITH COALESCING FILTER AND BY-PASS

AQUAoil coalescing oil separators with by-pass are designed for efficient removal of oil contaminants from surface runoff and stormwater, while preventing system overload during heavy rainfall events. In such cases, part of the water is diverted past the treatment chamber, ensuring uninterrupted operation even during intense precipitation. The separators are available with different treatment ratios, such as 10% or 20%, indicating the portion of the nominal separator capacity allocated to actual water treatment. The units are suitable for areas where most wastewater consists of stormwater and enable compliance with Class I discharge requirements.

1.2.2.1 AQUAoil OIL SEPARATORS WITH COALESCING FILTER AND BY-PASS – 10% TREATMENT

AQUAoil S1P-BP

* Vertical version (see sketch on page 9)

CAT.	NOMINAL FLOW RATE TYPE AQUAoil S1P-BP	TECHNICAL PARAMETERS		TYPE OF BY-PASS	PIPE CONNECTION C (mm)/ D1 INLET + OUTLET	LENGTH L / L1 (max) (mm)	INLET / OUTLET HEIGHT H1 (mm) / H2 (mm)		SEPARATOR HEIGHT H3 (mm)	DIAMETER DN (mm)	NUMBER OF INSPECTION OPENINGS	MAX. AREA (m ²)	IDENT
		Flow Rate	Sedimentation Chamber										
Medium	* 15/1,5	Flow Rate	1,5l/s	Internal	200	1000/1420	970	940	2050	1000	1	1000	214101602
		Sedimentation Chamber	300l										
		Total Volume	800l										
Small	* 30/3	Flow Rate	3l/s	Internal	250	1000/1400	1170	1140	2310	1000	1	2000	214101610
		Sedimentation Chamber	300l										
		Total Volume	1000l										
Medium	*30/3	Flow Rate	3l/s	External	250	1000/1400	1420	1390	2560	1000	1	2000	214101612
		Sedimentation Chamber	600l										
		Total Volume	1200l										
Small	50/5	Flow Rate	5l/s	External	315	1640/2520	1300	1250	1900	1400	1	4000	214101630
		Sedimentation Chamber	500l										
		Total Volume	2000l										
Medium	50/5	Flow Rate	5l/s	External	315	1950/2850	1300	1250	1900	1400	1	4000	214101632
		Sedimentation Chamber	1000l										
		Total Volume	2500l										
Small	60/6	Flow Rate	6l/s	External	315	1640/2520	1300	1250	1900	1400	1	4000	214101640
		Sedimentation Chamber	600l										
		Total Volume	2000l										
Medium	60/6	Flow Rate	6l/s	External	315	1950/2850	1300	1250	1900	1400	1	4000	214101642
		Sedimentation Chamber	1200l										
		Total Volume	2500l										
Small	80/8	Flow Rate	8l/s	External	315	1950/2850	1300	1250	1900	1400	1	5400	214101650
		Sedimentation Chamber	800l										
		Total Volume	2500l										
Medium	80/8	Flow Rate	8l/s	External	315	1870/2590	1530	1480	2200	1750	1	5400	214101652
		Sedimentation Chamber	1600l										
		Total Volume	3500l										
Small	100/10	Flow Rate	10l/s	External	400	1870/2590	1530	1480	2200	1750	1	6700	214101660
		Sedimentation Chamber	1000l										
		Total Volume	3500l										

AQUAoil S1P-BP

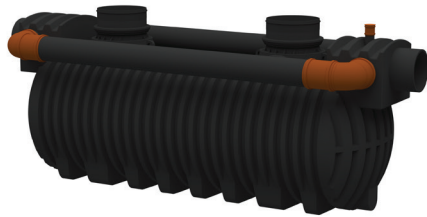
CAT.	NOMINAL FLOW RATE TYPE AQUAoil S1P-BP	TECHNICAL PARAMETERS		TYPE OF BY-PASS	PIPE CONNECTION C (mm) / D1 INLET + OUTLET	LENGTH L / L1 (max) (mm)	INLET / OUTLET HEIGHT H1 (mm) / H2 (mm)		SEPARATOR HEIGHT H3 (mm)	DIAMETER DN (mm)	NUMBER OF INSPECTION OPENINGS	MAX. AREA (m ²)	IDENT
		Flow Rate	Sedimentation Chamber										
Medium	100/10	Flow Rate	10l/s	External	400	3400/4100	1530	1480	2250	1750	1	6700	214101662
		Sedimentation Chamber	2000l										
		Total Volume	7000l										
Small	150/15	Flow Rate	15l/s	External	400	1870/2590	1530	1480	2200	1750	1	10000	214101670
		Sedimentation Chamber	1500l										
		Total Volume	3500l										
Medium	150/15	Flow Rate	15l/s	External	400	3400/4100	1530	1480	2250	1750	1	10000	214101672
		Sedimentation Chamber	3000l										
		Total Volume	7000l										
Small	200/20	Flow Rate	20l/s	External	400	2930/3630	1530	1480	2250	1750	1	13400	214101680
		Sedimentation Chamber	2000l										
		Total Volume	6000l										
Medium	200/20	Flow Rate	20l/s	External	400	4015/4660	1530	1480	2250	1750	2	13400	214101682
		Sedimentation Chamber	4000l										
		Total Volume	8000l										
Small	300/30	Flow Rate	30l/s	External	500	2935/3900	1530	1480	2250	1750	2	20000	214101690
		Sedimentation Chamber	3000l										
		Total Volume	6000l										
Medium	300/30	Flow Rate	30l/s	External	500	4950/5750	1530	1480	2250	1750	2	20000	214101692
		Sedimentation Chamber	6000l										
		Total Volume	10000l										
Small	400/40	Flow Rate	40L/s	External	500	4015/4820	1530	1480	2250	1750	2	26500	214101700
		Sedimentation Chamber	4000l										
		Total Volume	8000l										
Medium	400/40	Flow Rate	40l/s	Internal	500	4830/5550	1650	1550	2630	2300	2	26500	214101702
		Sedimentation Chamber	8000l										
		Total Volume	16000l										
Small	500/50	Flow Rate	50l/s	Internal	630	3900/4720	1650	1550	2630	2300	2	33200	214101710
		Sedimentation Chamber	5000l										
		Total Volume	12000l										
Medium	500/50	Flow Rate	50l/s	Internal	630	5830/6670	1650	1550	2630	2300	2	33200	214101712
		Sedimentation Chamber	10000l										
		Total Volume	20000l										
Small	600/60	Flow Rate	60l/s	External	630	3900/4720	1650	1550	2630	1750	2	40000	214101720
		Sedimentation Chamber	6000l										
		Total Volume	12000l										

AQUAoil S1P-BP

CAT.	NOMINAL FLOW RATE TYPE AQUAoil S1P-BP	TECHNICAL PARAMETERS		TYPE OF BY-PASS	PIPE CONNECTION C (mm)/ D1 INLET + OUTLET	LENGTH L / L1 (max) (mm)	INLET / OUTLET HEIGHT H1 (mm) / H2 (mm)		SEPARATOR HEIGHT H3 (mm)	DIAMETER DN (mm)	NUMBER OF INSPECTION OPENINGS	MAX. AREA (m ²)	IDENT
		Flow Rate	Sedimentation Chamber										
Medium	600/60	Flow Rate	60l/s	Internal	630	5830/6670	1650	1550	2630	2300	2	40000	214101722
		Sedimentation Chamber	12000l										
		Total Volume	20000l										
Small	700/70	Flow Rate	70l/s	Internal	800	4830/5650	1650	1550	2630	2300	2	46600	214101730
		Sedimentation Chamber	7000l										
		Total Volume	16000l										
Medium	700/70	Flow Rate	70l/s	Internal	800	8040/8950	1650	1550	2630	2300	3	46600	214101732
		Sedimentation Chamber	14000l										
		Total Volume	28000l										
Small	800/80	Flow Rate	80l/s	Internal	800	4850/5650	1650	1550	2630	2300	2	53400	214101740
		Sedimentation Chamber	8000l										
		Total Volume	16000l										
Medium	800/80	Flow Rate	80l/s	Internal	800	8040/8950	1650	1550	2630	2300	3	53400	214101742
		Sedimentation Chamber	16000l										
		Total Volume	28000l										
Small	1000/100	Flow Rate	100l/s	Internal	800	5350/6150	1650	1550	2630	2300	2	66000	214101750
		Sedimentation Chamber	10000l										
		Total Volume	18000l										
Medium	1000/100	Flow Rate	100l/s	Internal	800	10300/11200	1650	1550	2630	2300	3	66000	214101752
		Sedimentation Chamber	20000l										
		Total Volume	36000l										
Small	1250/125	Flow Rate	125l/s	Internal	800	7600/8300	1650	1550	2630	2300	3	83400	214101760
		Sedimentation Chamber	12500l										
		Total Volume	26000l										
Medium	1250/125	Flow Rate	125l/s	Internal	800	12980/13580	1650	1550	2630	2300	3	83400	214101762
		Sedimentation Chamber	25000l										
		Total Volume	46000l										

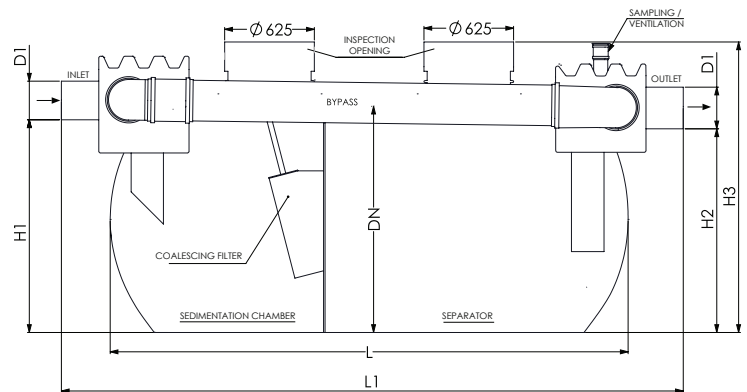
External By-Pass

AQUAoil S1P
50/5 - 600/60*



Internal By-Pass

AQUAoil S1P
400/40 - 1250/125*



1.2.2.2 AQUAoil OIL SEPARATORS WITH COALESCING FILTER AND BY-PASS – 20% TREATMENT

AQUAoil S1P-BP

* Vertical version (see sketch on page 9).

CAT.	NOMINAL FLOW RATE TYPE AQUAoil S1P-BP	TECHNICAL PARAMETERS		TYPE OF BY-PASS	PIPE CONNECTION C (mm)/ D1 INLET + OUTLET	LENGTH L / L1 (max) (mm)	INLET / OUTLET HEIGHT H1 (mm) / H2 (mm)		SEPARATOR HEIGHT H3 (mm)	DIAMETER DN (mm)	NUMBER OF INSPECTION OPENINGS	MAX. AREA (m ²)	IDENT
		Flow Rate	Sedimentation Chamber										
Medium	* 15/3	Flow Rate	3l/s	Internal	250	1000/1400	1170	1140	2310	1000	1	1000	214102602
		Sedimentation Chamber	600l										
		Total Volume	1000l										
Small	* 30/6	Flow Rate	6l/s	Internal	315	1000/1400	1355	1325	2560	1000	1	2000	214102610
		Sedimentation Chamber	600l										
		Total Volume	1200l										
Medium	*30/6	Flow Rate	6l/s	External	315	1640/2520	1300	1250	1900	1400	1	2000	214102612
		Sedimentation Chamber	1200l										
		Total Volume	2000l										
Small	50/10	Flow Rate	10l/s	External	400	1950/2850	1300	1250	1900	1400	1	4000	214102630
		Sedimentation Chamber	1000l										
		Total Volume	2500l										
Medium	50/10	Flow Rate	10l/s	External	400	1870/2590	1530	1480	2200	1750	1	4000	214102632
		Sedimentation Chamber	2000l										
		Total Volume	3500l										
Small	60/12	Flow Rate	12l/s	External	400	1950/2850	1300	1250	1900	1400	1	4000	214102640
		Sedimentation Chamber	1200l										
		Total Volume	2500l										
Medium	60/12	Flow Rate	12l/s	External	400	1870/2590	1530	1480	2200	1750	1	4000	214102642
		Sedimentation Chamber	2400l										
		Total Volume	3500l										
Small	80/16	Flow Rate	16l/s	External	400	1870/2590	1530	1480	2200	1750	1	5400	214102650
		Sedimentation Chamber	1600l										
		Total Volume	3500l										
Medium	80/16	Flow Rate	16l/s	External	400	2930/3630	1530	1480	2250	1750	1	5400	214102652
		Sedimentation Chamber	3200l										
		Total Volume	6000l										
Small	100/20	Flow Rate	20L/s	External	500	3400/4080	1530	1480	2250	1750	1	6700	214102660
		Sedimentation Chamber	2000l										
		Total Volume	7000l										
Medium	100/20	Flow Rate	20l/s	External	500	4950/5750	1530	1480	2250	1750	2	6700	214102662
		Sedimentation Chamber	4000l										
		Total Volume	10000l										
Small	150/30	Flow Rate	30l/s	External	500	3400/4200	1530	1480	2250	1750	1	10000	214102670
		Sedimentation Chamber	3000l										
		Total Volume	7000l										

AQUAoil S1P-BP

CAT.	NOMINAL FLOW RATE TYPE AQUAoil S1P-BP	TECHNICAL PARAMETERS		TYPE OF BY-PASS	PIPE CONNECTION C (mm)/ D1 INLET + OUTLET	LENGTH L / L1 (max) (mm)	INLET / OUTLET HEIGHT H1 (mm) / H2 (mm)		SEPARATOR HEIGHT H3 (mm)	DIAMETER DN (mm)	NUMBER OF INSPECTION OPENINGS	MAX. AREA (m ²)	IDENT
		Flow Rate	Sedimentation Chamber										
Medium	150/30	Flow Rate	30l/s	External	500	4950/5750	1530	1480	2250	1750	2	10000	214102672
		Sedimentation Chamber	6000l										
		Total Volume	10000l										
Small	200/40	Flow Rate	40l/s	External	500	4015/4820	1530	1480	2250	1750	2	13400	214102680
		Sedimentation Chamber	4000l										
		Total Volume	8000l										
Medium	200/40	Flow Rate	40l/s	Internal	500	4830/5550	1650	1550	2630	2300	2	13400	214102682
		Sedimentation Chamber	8000l										
		Total Volume	16000l										
Small	300/60	Flow Rate	60l/s	External	630	4950/5750	1530	1480	2250	1750	2	20000	214102690
		Sedimentation Chamber	6000l										
		Total Volume	10000l										
Medium	300/60	Flow Rate	60l/s	Internal	630	5830/6670	1650	1550	2630	2300	2	20000	214102692
		Sedimentation Chamber	12000l										
		Total Volume	20000l										
Small	400/80	Flow Rate	80l/s	Internal	800	4850/5650	1650	1550	2630	2300	2	26500	214102700
		Sedimentation Chamber	8000l										
		Total Volume	16000l										
Medium	400/80	Flow Rate	80l/s	Internal	800	8040/8950	1650	1550	2630	2300	3	26500	214102702
		Sedimentation Chamber	16000l										
		Total Volume	28000l										
Small	500/100	Flow Rate	100l/s	Internal	800	5830/6770	1650	1550	2630	2300	2	33200	214102710
		Sedimentation Chamber	10000l										
		Total Volume	20000l										
Medium	500/100	Flow Rate	100l/s	Internal	800	12980/13580	1650	1550	2630	2300	3	33200	214102712
		Sedimentation Chamber	20000l										
		Total Volume	46000l										
Small	600/120	Flow Rate	120l/s	Internal	800	5830/6770	1650	1550	2630	2300	2	40000	214102720
		Sedimentation Chamber	12000l										
		Skupni vol.	20000l										
Medium	600/120	Flow Rate	120l/s	External	800	12980/13580	1650	1550	2630	2300	3	40000	214102722
		Sedimentation Chamber	24000l										
		Skupni vol.	46000l										
Small	700/140	Flow Rate	140l/s	Internal	800	8040/8950	1650	1550	2630	2300	3	46600	214102730
		Sedimentation Chamber	14000l										
		Skupni vol.	28000l										
Medium	700/140	Flow Rate	140l/s	Internal	800	17100/17800	1650	1550	2630	2300	5	46600	214102732
		Sedimentation Chamber	28000l										
		Skupni vol.	36000+20000l										

AQUAoil S1P-BP

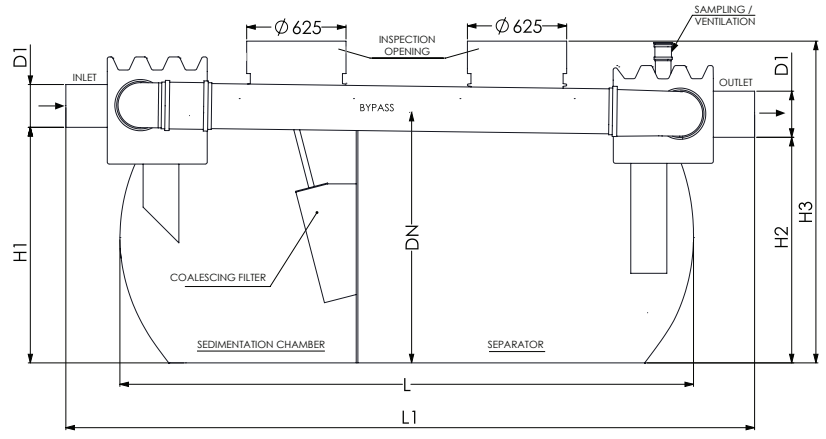
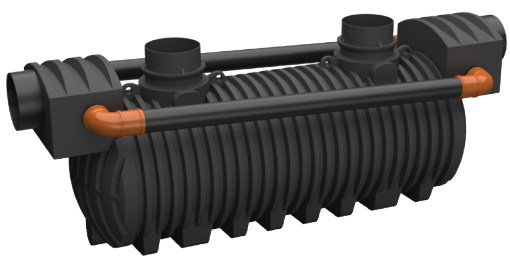
CAT.	NOMINAL FLOW RATE TYPE AQUAoil S1P-BP	TECHNICAL PARAMETERS		TYPE OF BY-PASS	PIPE CONNECTION C (mm)/ D1 INLET + OUTLET	LENGTH L / L1 (max) (mm)	INLET / OUTLET HEIGHT H1 (mm) / H2 (mm)		SEPARATOR HEIGHT H3 (mm)	DIAMETER DN (mm)	NUMBER OF INSPECTION OPENINGS	MAX. AREA (m ²)	IDENT
		Flow Rate	Sedimentation Chamber										
Small	800/160	Flow Rate	160l/s	Internal	800	8040/8950	1650	1550	2630	2300	3	53400	214102740
		Sedimentation Chamber	16000l										
		Total Volume	28000l										
Medium	800/160	Flow Rate	160l/s	Internal	800	17100/17800	1650	1550	2630	2300	5	53400	214102742
		Sedimentation Chamber	32000l										
		Total Volume	36000+20000l										
Small	1000/200	Flow Rate	200l/s	Internal	800	10300/11200	1650	1550	2630	2300	3	66000	214102750
		Sedimentation Chamber	20000l										
		Total Volume	36000l										
Medium	1000/200	Flow Rate	200l/s	Internal	800	18800/20650	1650	1550	2630	2300	5	66000	214102752
		Sedimentation Chamber	36000l										
		Total Volume	36000+30000l										
Small	1250/250	Flow Rate	250l/s	Internal	800	13000/13600	1650	1550	2630	2300	3	83400	214102760
		Sedimentation Chamber	25000l										
		Total Volume	46000l										
Medium	1250/250	Flow Rate	250l/s	Internal	800	23760/25160	1650	1550	2630	2300	5	83400	214102762
		Sedimentation Chamber	50000l										
		Total Volume	44000+40000l										

- Optional version with automatic closure for all types (SIST 858-1 (6.5.3))
- Optional version with oil level sensor (SIST 851-1 (6.5.4))

Max. area calculated for a rainfall intensity of 150 l/s-ha at a maximum retention time T max. = 3 min

External By-Pass AQUAoil S1P 30/6 - 300/60*

Internal By-Pass AQUAoil S1P 200/40 - 1250/250*



* The type of by-pass for each oil separator model is specified in the table.
* Images are symbolic and do not represent the actual shape of the oil separators.

3. AQUAoil GREASE SEPARATORS

In modern catering establishments, effective control and careful management of fats are essential for the smooth operation of kitchen systems and for reducing environmental impact. Grease separators provide a technological solution that prevents waste fats from entering the sewer system, thereby reducing the risk of blockages and environmental penalties. The use of grease separators is not only compliant with legal requirements, but also contributes to improved hygiene standards, extended service life of sewer systems, and optimization of operational processes in catering facilities. They are manufactured and dimensioned in accordance with the SIST EN 1825 standard.

In catering establishments, public institutions, and the food industry, where fats occur during operational processes, legislation requires the mandatory separation of fats and oils of organic origin before wastewater is discharged into the sewer system, septic tank, or treatment plant.

AQUAoil NS S2P - GR

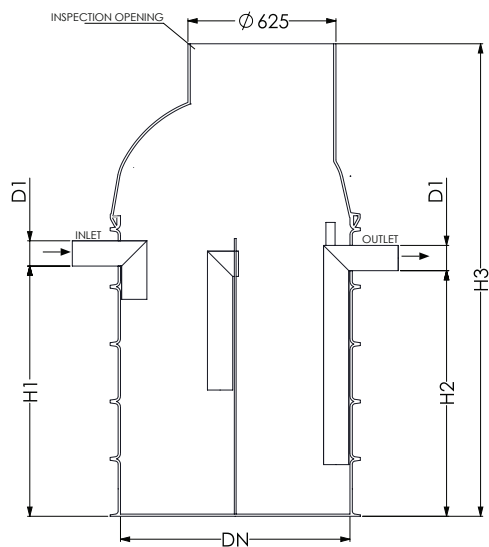
CAT.	NOMINAL FLOW RATE TYPE AQUAoil S2P GR Q (l/s)	TOTAL VOLUME (l)	PIPE CONNECTION C (mm)/ D1 INLET + OUTLET	LENGTH L (mm)	INLET / OUTLET HEIGHT H1 (mm) / H2 (mm)		SEPARATOR HEIGHT H3 (mm)	DIAMETER DN (mm)	NUMBER OF INSPECTION OPENINGS	NUMBER OF MEALS (meals/ day)	IDENT
1	* 1	500	110	1000	830	800	1250-1500	800	1	100	214094000
2	* 2	700	110	750	690	665	1500-1750	1000	1	200	214094005
3	* 3	1000	110	1250	1080	1055	1750-2050	1000	1	300	214094010
4	4	2000	110	1640	1260	1210	1700	1400	1	400	214094015
6	6	2500	125	1940	1250	1200	1700	1400	1	600	214094020
10	10	3500	160	1870	1575	1550	2000	1750	1	1000	214094030
15	15	5500	200	2800	1540	1515	2000	1750	2	1500	214094040
20	20	8000	200	4020	1540	1515	2060	1750	2	2000	214094050
25	25	10000	200	4950	1540	1515	2060	1750	2	2500	214094060

* Vertical version

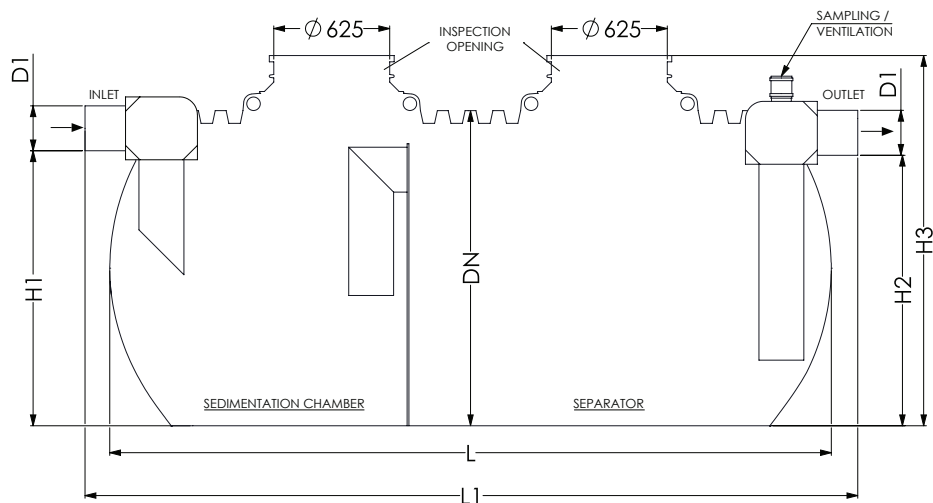
Max. area calculated for a rainfall intensity of 150 l/s-ha at a maximum retention time T max. = 3 min
Optional version with automatic closure for all types



AQUAoil S2P vertical



AQUAoil S2P horizontal



* Images are symbolic and do not represent the actual shape of the grease separators.

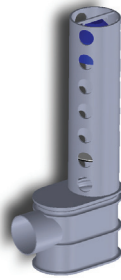


4. ADDITIONAL EQUIPMENT



Oil and Sludge Level Sensor

The oil level sensor is a device equipped with two probes. If the oil level reaches 90% of the oil separator capacity, the device alerts us with an audible and visual signal.



Automatic Shut-Off Device

The automatic shut-off device prevents oil from escaping the separator if the oil level is too high and there is a risk of oil entering the outlet pipe.



PVC Pipes

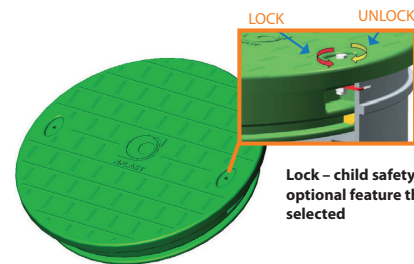
For raising the ventilation point and for connections between oil separators.



Oil Level Measuring Rod



Sampling Pump



Lock – child safety lock is an optional feature that can be selected

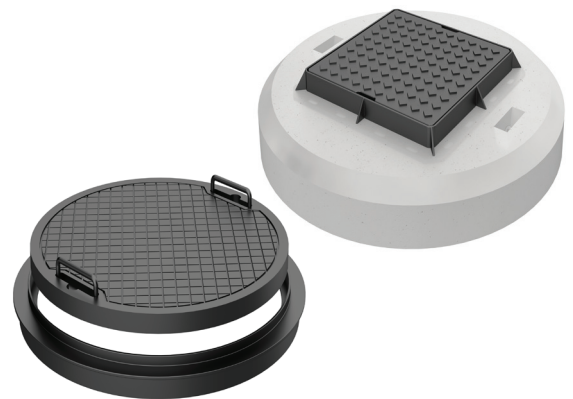
PE Covers Ø 625



Extension Ring for Inspection Opening



Coalescing Filters

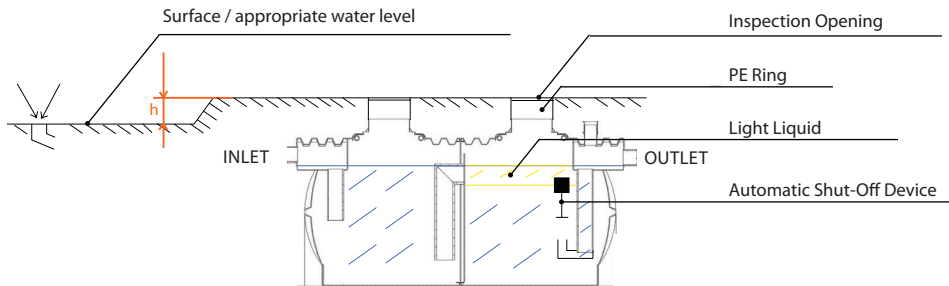


Class A to D Covers for Traffic Areas (composite and cast iron covers)

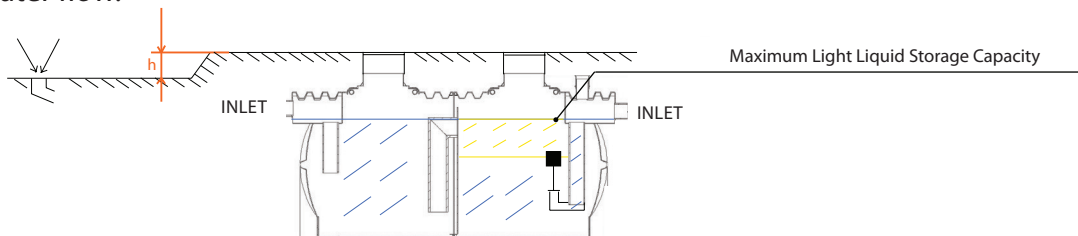
When installing and maintaining AQUAoil oil and grease separators, strictly follow the enclosed instructions for proper installation. Installation and maintenance instructions are also available at www.aplast.si.

5. INSTALLATION METHOD IN CASES WITH AUTOMATIC SHUT-OFF DEVICE

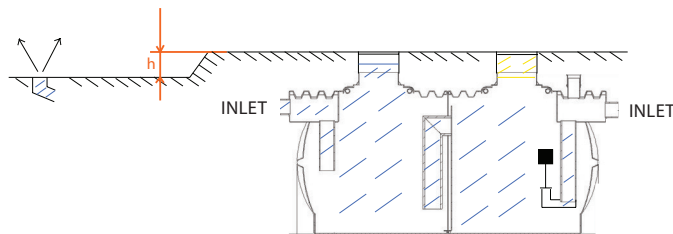
a) The image below shows the installation systems.



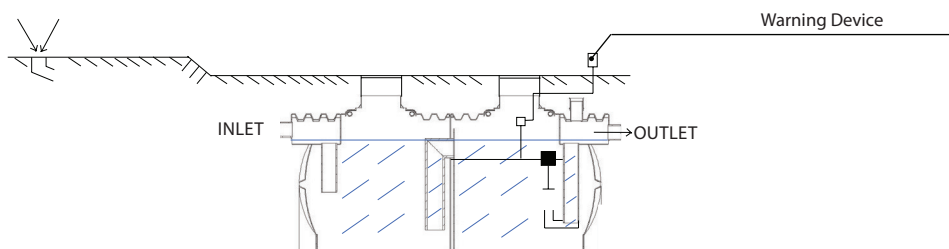
b) The maximum storage capacity has been reached. The automatic shut-off device is closed and stops the wastewater flow.



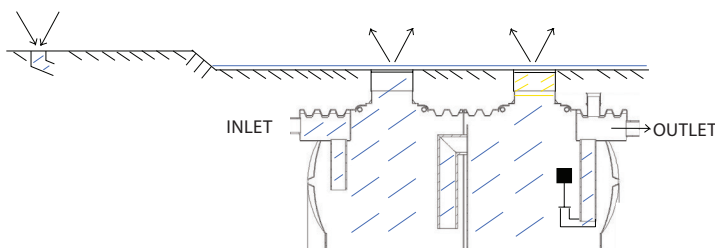
c) Additional wastewater raises the liquid level in the system until the lowest installed outlet is reached. The light liquid level in the extension is higher than the corresponding water level in the drainage network. To prevent the escape of light liquid, the level of the extension shaft covers must be higher than the level of the outlets.



d) Cover below the appropriate level. Protection of the installation by means of a warning device to prevent the situation described under point e.



e) A closed automatic shut-off device causes light liquid to escape outside the extension sections.



NEW: Configurator



EFFICIENT



ADAPTED



SIMPLE

TRY THE NEW APLAST CONFIGURATOR



About the Manufacturer:

At **APLAST d.o.o.** we specialize in manufacturing a wide range of products using rotational molding (rotomolding) technology. With more than **120 employees**, we follow the principles of technological innovation, build our own brand, and enjoy a strong reputation both on the domestic and international markets. In our production process, we use state-of-the-art rotational molding technology. Our core products include solutions for underground infrastructure, ranging from sewerage and water supply systems to products for wastewater collection and treatment. We offer efficient and environmentally friendly solutions for wastewater collection and treatment, storage systems for drinking and process water, underground waste collection and separation systems, and components for tubular floats. We also provide solutions for the automotive industry.

In-House Development and Advanced Partnerships

Our products are the result of our own development department, which combines all the necessary expertise – from design and engineering to final product realization. At the same time, we are a reliable partner who works closely with customers to develop tools and ensure the production of the desired product. We are proud holders of the ISO 9001 quality management system certificate and the ISO 14001 environmental management system certificate.



APLAST proizvodnja in trgovina, d. o. o.
Ložnica pri Žalcu 37, 3310 Žalec, Slovenija
www.aplast.si | info@aplast.si

ISO 9001
ISO 14001

BUREAU VERITAS
Certification

